



HARDWICK

DOOR & WINDOW IRONMONGERY

October 2024

www.hardwick.co.uk

FINEST BRASSWARE TO ENHANCE QUALITY DOORS AND WINDOWS

www.hardwick.co.uk

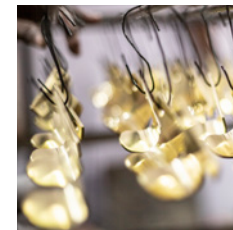


www.hardwick.co.uk

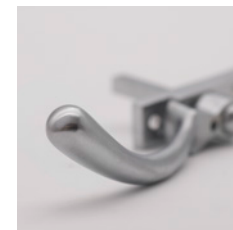
Contents



03
Hardwick
introduction



05
Finishes



07
Lyndon
Classic Range



09
Burley
Classic Range



11
Cottesmore /
Accessories
Classic Range



13
Ayston
Classic Range

15
Ryhall / Hambleton
Classic Range

17
Sash Hardware
Classic Range

19
Sentry+
3* Euro Cylinders

21
Burley
Heritage Range

23
Brooke / Curlytail /
Peardrop
Heritage Range

25
Ayston
Heritage Range



Hardware for Joiners

Hardwick ironmongery is designed with the joiner in mind.

Our 35+ years of experience selling hardware means that we understand what it takes to create a range of ironmongery that enhances quality doors and windows. Here are the 3 main reasons why joiners should be offering **Hardwick** as their number 1 ironmongery option:

Finishes

Hardwick offers matching finishes across door levers, entrance doors, casement windows and sash windows.

The perfect opportunity to simplify your clients' choice of hardware whilst retaining a hardware match across the range of different joinery products.

Furthermore, with a range of 7 finish options across the Hardwick Classic and Heritage ranges, there's an option that will suit every property.

Range

Designed for the 21st century, Hardwick ironmongery exudes classic elegance whilst remaining suitable for modern locking systems.

Don't compromise on your door or window security with old-fashioned hardware - use the Hardwick range of door and window espag handles.

BSI 3-star high security euro cylinders are also available in 4 different finishes from stock! Details make the difference to enhance your doors.

Testing

Tested to the rigours of everyday use, Hardwick ironmongery won't let you down.

Our window espag range has been tested to over 10,000 cycles which makes it the best solid-brass window espag available on the market.

Our door handles are also tested to over 10,000 cycles with high quality stainless steel fixings and grubscrews, perfect for use with any type of timber.



**IDEAL FOR USE
WITH ACCOYA®**

All our products are supplied with stainless steel fixings and manufactured out of solid brass. We've undertaken testing to ensure **every product** in the Hardwick Classic and Heritage Ranges are suitable for use with Accoya.

Follow the guidelines on www.hardwick.co.uk for recommendations on timber preparation.

Handing:

There are LH and RH versions of some ironmongery products; use the below diagrams to determine which hand you require:

Door Handles

(viewed from outside)



RIGHT HAND



LEFT HAND

Window Handles

(viewed from inside)



LEFT HAND



RIGHT HAND

Finishes

Distinctive finishes are the hallmark of Hardwick ironmongery. Create your own statement look and we'll guarantee you can find a perfect match across the range.



Chrome Plated (CP)

Chrome Plated is a classic finish that is easy to wipe clean and maintains its sheen over time.

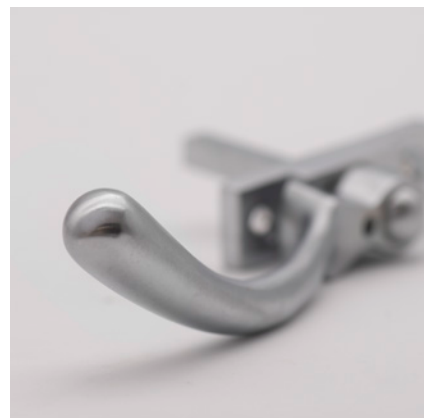
Highly polished, it has a cooler feel to it thanks to its silver tones and adds an opulent feel to doors and windows. Elegant with light paint colours or powerful with darker shades.



Polished Brass (PB)

Perfect for period properties, Polished Brass is a timeless choice for ironmongery. Its reflective finish will change subtly depending on the light in the room and it's perfect for providing a contrasting statement to darker paint colours.

The solid forged brass is carefully polished to an almost mirror-like shine and laquered to maintain the clean, crisp look.



Satin Chrome Plated (SCP)

Satin Chrome Plated exudes graceful charm as a subtle alternative to polished finishes. Its matte appearance brings a contemporary edge to classically designed hardware.

With its cooler monochromatic tones, Satin Chrome Plated ironmongery is a versatile design choice as it offsets bolder paint colours but still enhances neutral shades.



Antique Brass (AB)

Antique Brass is a finish that embraces tradition - evoking a stately effect to door and window hardware. It offers an elegant and classy finishing touch to period interiors; especially with lighter shades of paint.

Providing a refined finish, Antique Brass is textured in appearance to emulate a naturally aged product.



Satin Brass (SB)

A subtle alternative to Polished Brass, the textured finish of Satin Brass softens its reflectiveness, leaving a more muted colour.

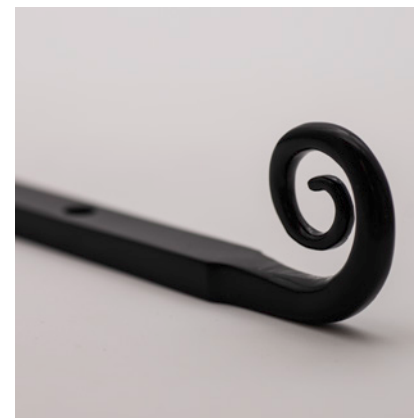
Its matte appearance brings a contemporary edge to classically designed hardware making it a very versatile finish choice to complement a wide range of paint colours.



Trojan Bronze (TB)

Inspired by the legendary events of the Trojan war, bronze is an extremely durable metal historically used for weapons and armour. It also provides an attractive finish for ironmongery for period or contemporary properties.

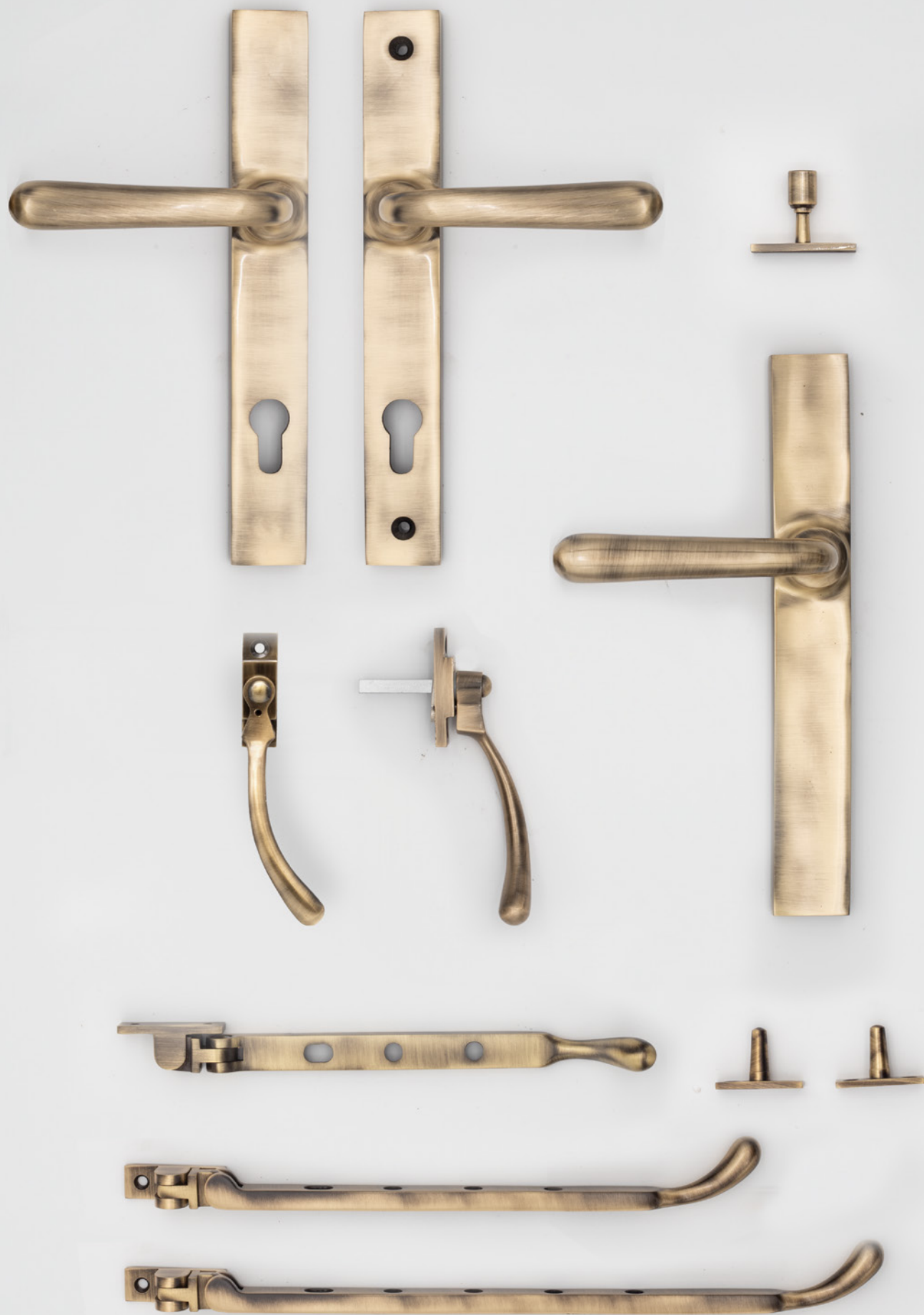
The dark gunmetal-like tones have a touch of warmth which makes Trojan Bronze a great alternative to pewter hardware.



Forged Black (FB)

NB: Only available with products in the Hardwick Heritage range.

Hardwick Heritage range is designed to emulate the finest traditions in British metalworking. The Forged Black finish has a slight sheen to replicate hardware fresh from the blacksmith's anvil; an ideal finish for traditional and heritage properties.



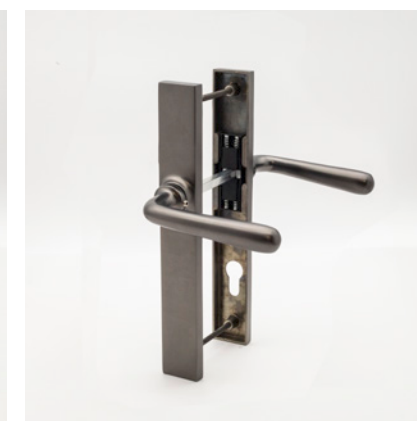
Lyndon

Classic Range



3050
Lyndon MPL Door Lever

- ▶ 92mm centres to suit multipoint locks.
- ▶ Dual-action spring cassette in backplate for longevity.
- ▶ Manufactured from Solid Brass and supplied with matching stainless steel fixings.



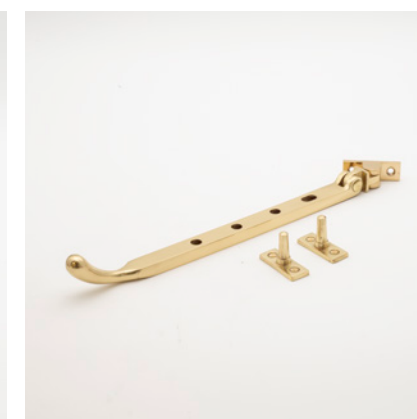
3051
Lyndon MPL/Passage Lever

- ▶ External side with blank plate/internal side with 92mm centres to suit multipoint locks.
- ▶ Dual-action spring cassette in backplate for longevity.
- ▶ Manufactured from Solid Brass and supplied with matching stainless steel fixings.



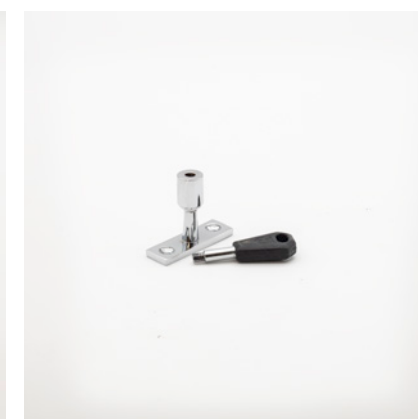
2050/2051
Lyndon Window Espag Handle

- ▶ Handed (view page 4 for handing info).
- ▶ Window espag handle with 40mm spindle.
- ▶ Lockable with hex key (supplied).
- ▶ Manufactured from Solid Brass and supplied with matching stainless steel fixings.



2073/2074/2075
Lyndon Window Stay

- ▶ Window stay available in 8"/202mm (2073), 10"/254mm (2074) and 12"/305mm (2075).
- ▶ Supplied with 2 stay-pins.
- ▶ Manufactured from Solid Brass and supplied with matching stainless steel fixings.



2999
Lockable Stay Pin

- ▶ Lockable stay pin to suit all Classic Range window stays.
- ▶ Lockable with hex key (supplied).
- ▶ Manufactured from Solid Brass and supplied with matching stainless steel fixings.

All Classic Range products are available in the following finishes: (page 5 for more info)

(AB)



(CP)



(PB)



(SB)

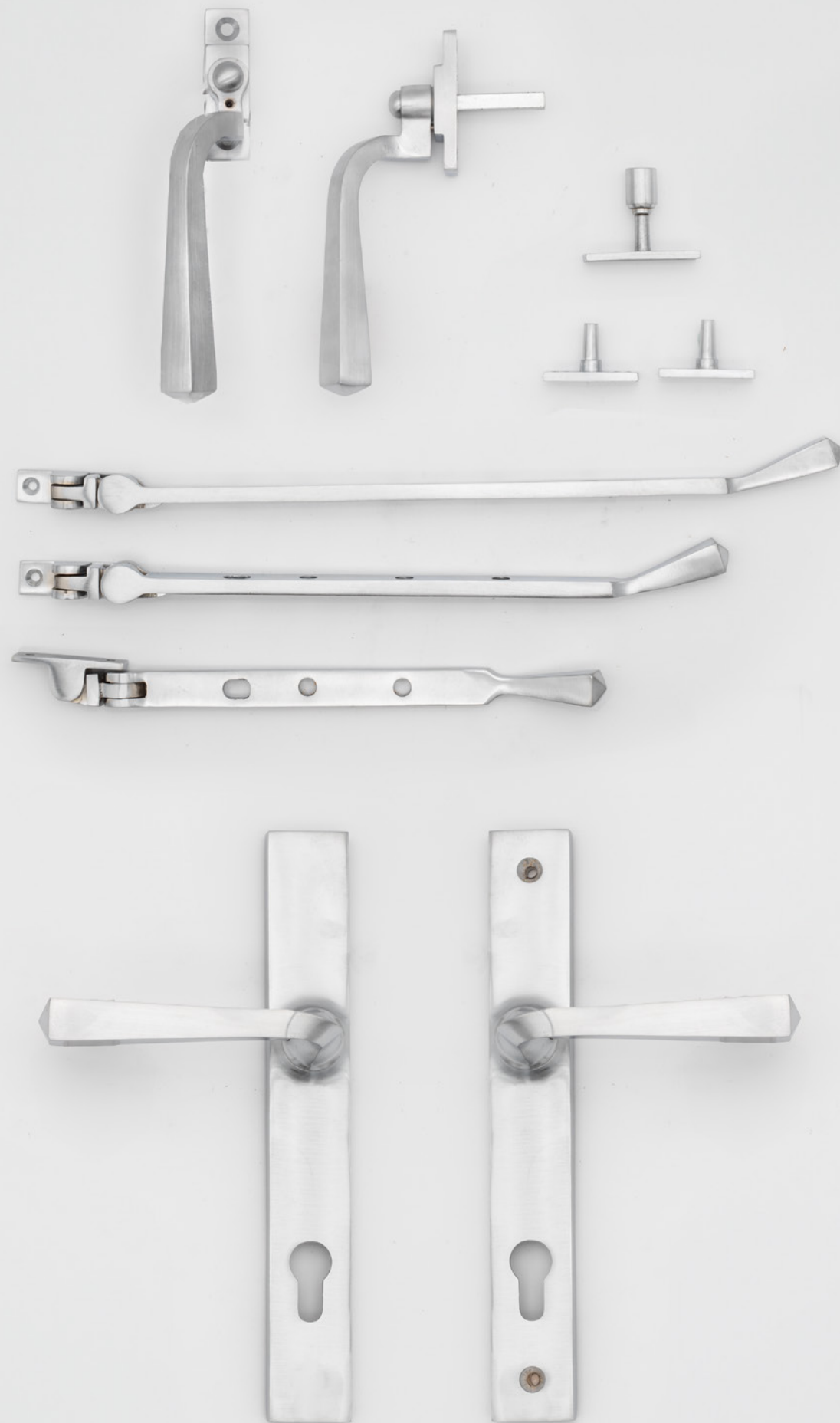


(SCP)



(TB)





Burley

Classic Range



3200 Burley MPL Door Lever

- ▶ 92mm centres to suit multipoint locks.
- ▶ Dual-action spring cassette in backplate for longevity.
- ▶ Manufactured from Solid Brass and supplied with matching stainless steel fixings.



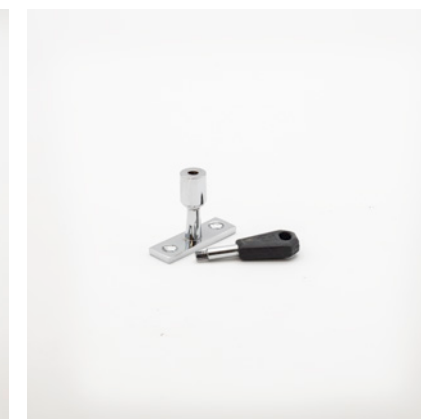
2200/2201 Burley Window Espag Handle

- ▶ Handed (view page 4 for handing info).
- ▶ Window espag handle with 40mm spindle.
- ▶ Lockable with hex key (supplied).
- ▶ Manufactured from Solid Brass and supplied with matching stainless steel fixings.



2210/2211/2212 Burley Window Stay

- ▶ Window stay available in 8"/202mm (2210), 10"/254mm (2211) and 12"/305mm (2212).
- ▶ Supplied with 2 stay-pins.
- ▶ Manufactured from Solid Brass and supplied with matching stainless steel fixings.



2999 Lockable Stay Pin

- ▶ Lockable stay pin to suit all Classic Range window stays.
- ▶ Lockable with hex key (supplied).
- ▶ Manufactured from Solid Brass and supplied with matching stainless steel fixings.

All Classic Range products are available in the following finishes: (page 5 for more info)

(AB)



(CP)



(PB)



(SB)



(SCP)



(TB)





Cottesmore / Other

Classic Range



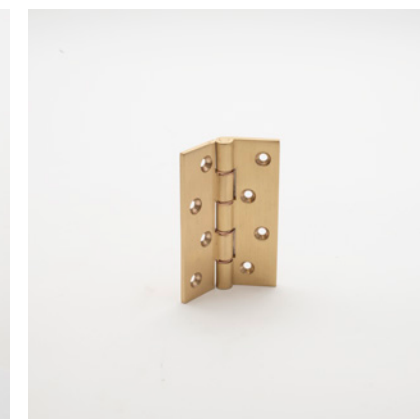
3100/3101
Cottesmore MPL Door Lever

- ▶ Handed (view page 4 for handing info).
- ▶ 92mm centres to suit multipoint locks.
- ▶ Dual-action spring cassette in backplate for longevity.
- ▶ Manufactured from Solid Brass and supplied with matching stainless steel fixings.



4401
Classic Surface Door Bolt 152mm

- ▶ Surface door bolt supplied with 3 keep options.
- ▶ Manufactured from Solid Brass and supplied with matching stainless steel fixings.



4050
Classic DPBW Hinge 102x67x4mm

- ▶ Traditional hinges with Double Phosphor Bronze Washers (DPBW) for longevity.
- ▶ Manufactured from Solid Brass and supplied with matching stainless steel fixings.

All Classic Range products are available in the following finishes: (page 5 for more info)

(AB)



(CP)



(PB)



(SB)



(SCP)



(TB)





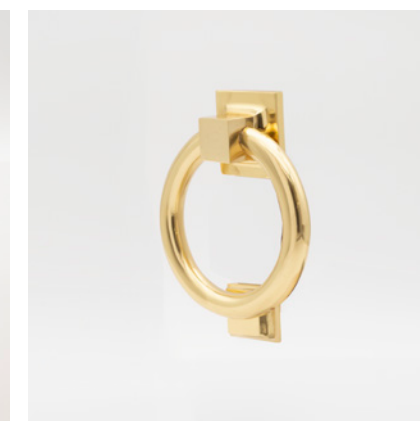
Ayston

Classic Range



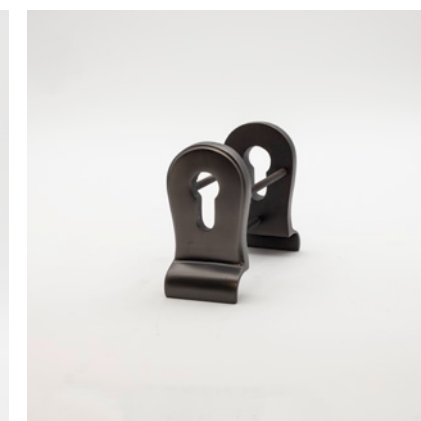
4110
Ayston Centre Door Knob

- ▶ Bolt-through centre door knob.
- ▶ Manufactured from Solid Brass and supplied with matching stainless steel fixings.



4210
Ayston Ring Door Knocker

- ▶ Stylish ring door knocker.
- ▶ Manufactured from Solid Brass and supplied with matching stainless steel fixings.



4005
Classic Euro Pull Set

- ▶ Back-to-back euro pull set.
- ▶ Manufactured from Solid Brass and supplied with matching stainless steel fixings.



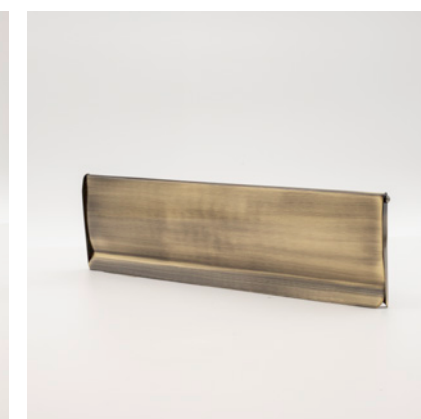
4010
Classic Euro Profile Escutcheon

- ▶ Euro profile escutcheon with concealed fixing points.
- ▶ Manufactured from Solid Brass and supplied with matching stainless steel fixings.



4300
Classic External Letterplate

- ▶ External Letterplate 305x98mm.
- ▶ To suit aperture of 245x65mm (at joiners discretion).
- ▶ Manufactured from Solid Brass and supplied with matching stainless steel fixings.



4310
Classic Internal Letter-Tidy

- ▶ Internal Letter-tydy 300x84mm.
- ▶ To suit aperture of 245x65mm (at joiners discretion).
- ▶ Manufactured from Solid Brass and supplied with matching stainless steel fixings.

All Classic Range products are available in the following finishes: (page 5 for more info)

(AB)



(CP)



(PB)



(SB)



(SCP)



(TB)



Hambleton / Ryhall

Classic Range



4120
Hambleton Centre Door Knob

- ▶ Bolt-through centre door knob.
- ▶ Manufactured from Solid Brass and supplied with matching stainless steel fixings.



4200
Ryhall Doctors Door Knocker

- ▶ Classic doctors door knocker.
- ▶ Manufactured from Solid Brass and supplied with matching stainless steel fixings.



4005
Classic Euro Pull Set

- ▶ Back-to-back euro pull set.
- ▶ Manufactured from Solid Brass and supplied with matching stainless steel fixings.



4010
Classic Euro Profile Escutcheon

- ▶ Euro profile escutcheon with concealed fixing points.
- ▶ Manufactured from Solid Brass and supplied with matching stainless steel fixings.



4300
Classic External Letterplate

- ▶ External Letterplate 305x98mm.
- ▶ To suit aperture of 245x65mm (at joiners discretion).
- ▶ Manufactured from Solid Brass and supplied with matching stainless steel fixings.



4310
Classic Internal Letter-Tidy

- ▶ Internal Letter-tydy 300x84mm.
- ▶ To suit aperture of 245x65mm (at joiners discretion).
- ▶ Manufactured from Solid Brass and supplied with matching stainless steel fixings.

All Classic Range products are available in the following finishes: (page 5 for more info)

(AB)



(CP)



(PB)



(SB)



(SCP)



(TB)





Classic Sash Hardware

Classic Range



1075
Ball Knob Narrow Claw Fastener

- ▶ Lockable with hex key (supplied).
- ▶ Manufactured from Solid Brass and supplied with matching stainless steel fixings.



1077
Reeded Narrow Claw Fastener

- ▶ Lockable with hex key (supplied).
- ▶ Manufactured from Solid Brass and supplied with matching stainless steel fixings.



1080
Narrow Fitch Fastener

- ▶ Lockable with hex key (supplied).
- ▶ Manufactured from Solid Brass and supplied with matching stainless steel fixings.



1069
Modern Narrow Brighton Fastener

- ▶ Non-locking.
- ▶ Manufactured from Solid Brass and supplied with matching stainless steel fixings.



1090
Curved Neck Sash Lift

- ▶ Traditional cast sash lift.
- ▶ Manufactured from Solid Brass and supplied with matching stainless steel fixings.



1095
Sash Handle

- ▶ 120mm sash handle.
- ▶ Manufactured from Solid Brass and supplied with matching stainless steel fixings.



1085 (19/29)
Roller Stop Set (19mm/29mm)

- ▶ 2x stops, 2x strikes, 4x threaded inserts (colour matched) and key.
- ▶ Manufactured from Solid Brass and supplied with matching stainless steel fixings.



1087 (19/30)
Flush Stop Set (19mm/30mm)

- ▶ 2x stops, 2x strikes and key.
- ▶ Manufactured from Solid Brass and supplied with matching stainless steel fixings.



1050/1051
Ball Bearing Pulley (Square/Radius)

- ▶ 45mm wheel 80kg ball bearing sash pulley; square end (1050) and radius end (1051).
- ▶ Manufactured from Solid Brass and supplied with matching stainless steel fixings.

All Classic Range products are available in the following finishes: (page 5 for more info)

(AB)



(CP)



(PB)



(SB)



(SCP)



(TB)





3* High Security Euro Cylinders

Sentry+ euro cylinders are BSI 3* rated top security but still stocked in 4 different finishes to create that "stand-out" door.

With horizontal keyway and high security dimple-cut keys, Sentry+ euro cylinders are available in key-key and key-thumbturn versions. We also have workshop facilities to offer keyed-alike cylinders if there are multiple doors on the same property.

Keys are protected with the unique code supplied with each cylinder meaning that no keys can be copied without the owner's permission.



Key/Key 3* Euro Cylinder Sizes

#	FINISH	OVERALL LENGTH	CYLINDER SPLIT KEY	KEY
HKS3535KKAB	Antique Brass	70mm	35mm	35mm
HKS3545KKAB	Antique Brass	80mm	35mm	45mm
HKS4040KKAB	Antique Brass	80mm	40mm	40mm
HKS4545KKAB	Antique Brass	90mm	45mm	45mm
HKS3535KKFB	Black	70mm	35mm	35mm
HKS3545KKFB	Black	80mm	35mm	45mm
HKS4040KKFB	Black	80mm	40mm	40mm
HKS4545KKFB	Black	90mm	45mm	45mm
HKS3535KKSCP	Satin Chrome	70mm	35mm	35mm
HKS3545KKSCP	Satin Chrome	80mm	35mm	45mm
HKS4040KKSCP	Satin Chrome	80mm	40mm	40mm
HKS4545KKSCP	Satin Chrome	90mm	45mm	45mm
HKS3535KKSB	Satin Brass	70mm	35mm	35mm
HKS3545KKSB	Satin Brass	80mm	35mm	45mm
HKS4040KKSB	Satin Brass	80mm	40mm	40mm
HKS4545KKSB	Satin Brass	90mm	45mm	45mm

Key/Turn 3* Euro Cylinder Sizes

#	FINISH	OVERALL LENGTH	CYLINDER SPLIT KEY	TURN
HKS3535KTAB	Antique Brass	70mm	35mm	35mm
HKS4040KTAB	Antique Brass	80mm	40mm	40mm
HKS4545KTAB	Antique Brass	90mm	45mm	45mm
HKS3535KTFB	Black	70mm	35mm	35mm
HKS4040KTFB	Black	80mm	40mm	40mm
HKS4545KTFB	Black	90mm	45mm	45mm
HKS3535KTSCP	Satin Chrome	70mm	35mm	35mm
HKS4040KTSCP	Satin Chrome	80mm	40mm	40mm
HKS4545KTSCP	Satin Chrome	90mm	45mm	45mm
HKS3535KTSB	Satin Brass	70mm	35mm	35mm
HKS4040KTSB	Satin Brass	80mm	40mm	40mm
HKS4545KTSB	Satin Brass	90mm	45mm	45mm

Add KA on end of code for keyed-alike.



Burley

Heritage Range



H600
Burley MPL Door Lever

- ▶ 92mm centres to suit multipoint locks.
- ▶ Dual-action spring cassette in backplate for longevity.
- ▶ Manufactured from Solid Brass and supplied with matching stainless steel fixings.



H601
Burley MPL/Passage Lever

- ▶ External side with blank plate/internal side with 92mm centres to suit multipoint locks.
- ▶ Dual-action spring cassette in backplate for longevity.
- ▶ Manufactured from Solid Brass and supplied with matching stainless steel fixings.



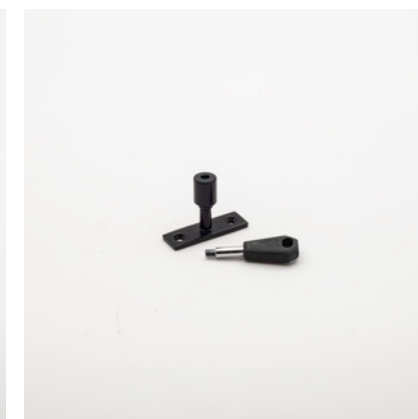
H520/H521
Burley Window Espag Fastener

- ▶ Handed (view page 4 for handing info).
- ▶ Window espag handle with 40mm spindle.
- ▶ Lockable with hex key (supplied).
- ▶ Manufactured from Solid Brass and supplied with matching stainless steel fixings.



H530/H531/H532
Burley Window Stay

- ▶ Window stay available in 8"/202mm (H530), 10"/254mm (H531) and 12"/305mm (H532).
- ▶ Supplied with 2 stay-pins.
- ▶ Manufactured from Solid Brass and supplied with matching stainless steel fixings.



H599
Lockable Stay Pin

- ▶ Lockable stay pin to suit all Heritage Range window stays.
- ▶ Lockable with hex key (supplied).
- ▶ Manufactured from Solid Brass and supplied with matching stainless steel fixings.

All Heritage Range products are available in Forged Black (page 5 for more info)

(FB)





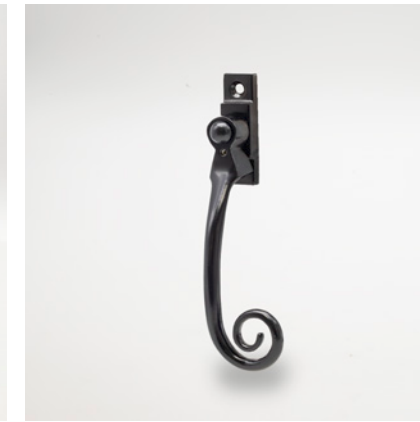
Brooke / Curlytail / Peardrop

Heritage Range



**H610
Brooke MPL Door Lever**

- ▶ 92mm centres to suit multipoint locks.
- ▶ Dual-action spring cassette in backplate for longevity.
- ▶ Manufactured from Solid Brass and supplied with matching stainless steel fixings.



**H500/H501
Curlytail Window Espag Fastener**

- ▶ Handed (view page 4 for handing info).
- ▶ Window espag handle with 40mm spindle.
- ▶ Lockable with hex key (supplied).
- ▶ Manufactured from Solid Brass and supplied with matching stainless steel fixings.



**H550/H551
Peardrop Window Espag Fastener**

- ▶ Handed (view page 4 for handing info).
- ▶ Window espag handle with 40mm spindle.
- ▶ Lockable with hex key (supplied).
- ▶ Manufactured from Solid Brass and supplied with matching stainless steel fixings.



**H510/H511/H512
Curlytail Window Stay**

- ▶ Window stay available in 8"/202mm (H510), 10"/254mm (H511) and 12"/305mm (H512)
- ▶ Supplied with 2 stay-pins.
- ▶ Manufactured from Solid Brass and supplied with matching stainless steel fixings.



**H560/H561/H562
Peardrop Window Stay**

- ▶ Window stay available in 8"/202mm (H560), 10"/254mm (H561) and 12"/305mm (H562)
- ▶ Supplied with 2 stay-pins.
- ▶ Manufactured from Solid Brass and supplied with matching stainless steel fixings.



**H599
Lockable Stay Pin**

- ▶ Lockable stay pin to suit all Heritage Range window stays.
- ▶ Lockable with hex key (supplied).
- ▶ Manufactured from Solid Brass and supplied with matching stainless steel fixings.

All Heritage Range products are available in Forged Black: (page 5 for more info)

(FB)





Ayston

Heritage Range



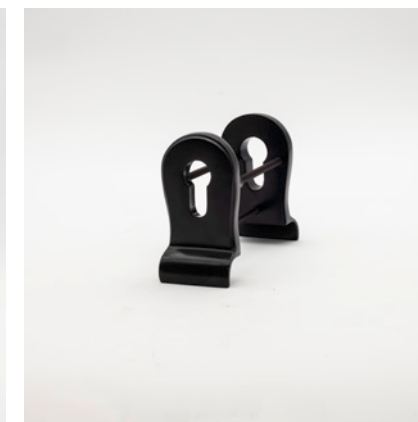
H710
Ayston Centre Door Knob

- ▶ Bolt-through centre door knob.
- ▶ Manufactured from Solid Brass and supplied with matching stainless steel fixings.



H720
Ayston Ring Door Knocker

- ▶ Stylish ring door knocker.
- ▶ Manufactured from Solid Brass and supplied with matching stainless steel fixings.



H700
Heritage Euro Pull Set

- ▶ Back-to-back euro pull set.
- ▶ Manufactured from Solid Brass and supplied with matching stainless steel fixings.



H705
Heritage Euro Profile Escutcheon

- ▶ Euro profile escutcheon with concealed fixing points.
- ▶ Manufactured from Solid Brass and supplied with matching stainless steel fixings.



H731
Heritage Sleeved Letterbox

- ▶ Fully weathersealed with brush on internal side for maximum performance.
- ▶ 4x bolt-through fixings to suit doors up to 65mm thick.

All Heritage Range products are available in Forged Black: (page 5 for more info)

(FB)





FINEST BRASSWARE TO ENHANCE
QUALITY DOORS AND WINDOWS

www.hardwick.co.uk
